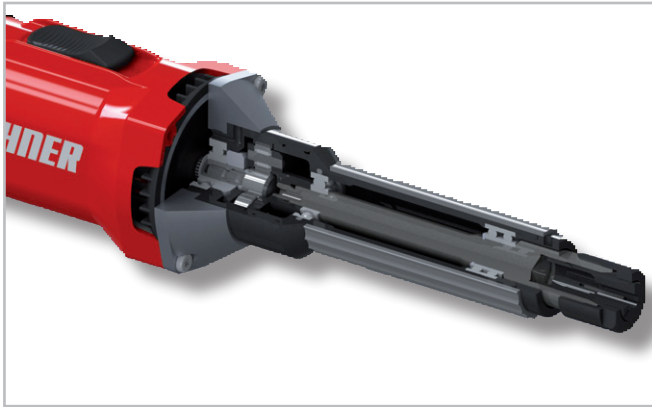


Straight grinder USG 9-R

The new, slow running straight grinder not only supplements the tried and tested **SUHNER G Series power tools**, but also represents the optimal midfield between the two other slow running straight grinders **USC 9-R (lower power)** and **USK 6-R (higher power)**.



Motor design and ventilation

The straight grinder is driven by a robust, powerful motor delivering 1050 W. This powerful motor in its compact, rigid housing is cooled by high efficiency ventilation, which also serves to safeguard a long service life for this straight grinder. Fresh air is drawn in through the ventilation slots in the switch cap. The slats behind the ventilation slots prevent accidental contact with the live components and are arranged for minimised eddying and hence a more uniform flow of air around the motor. The air gap and the outer diameter of the stator are therefore cooled at a uniform rate. The front radial fan on the armature shaft and the air baffle direct the heated air under 45° away from the operator through four apertures between the motor housing and the nose. This specific air discharge has its advantages: there is no air blowing in the operator's face, on his hand, or on the workpiece, and the nose need not be integrated in the ventilation function and so can be designed exclusively for its actual purpose. The stator winding is additionally cased in hard extra insulation that protects it from dust particles in the air flow.

Digital control electronics

The digital constant power electronics unit regulates the motor speed and keeps it constant even under high load. The speed can be varied over a wide range at the adjusting wheel on the back. Supported by its excellent ventilation and powerful motor, this straight grinder can still deliver a high torque in the bottom speed range as well.

The result is a wide range of optimal working speeds from 3800 to 8300 rpm.

Fitted with the latest protective measures, this constant power electronics unit moreover ensures safe operation. Whether starting current limitation, overload protection under continuous load, undervoltage protection, or restart prevention – all this is integrated as standard. This constant power electronics unit is operated at the new ergonomic two-way safety switch that also fulfils all of the requirements in the latest safety standards.

Nose

Yet another convincing feature of this powerful straight grinder is its compact ergonomic geometry. Its long, slender nose makes it the ideal solution for highly inaccessible sites as well. The specially designed, rubber lined grip on the nose lies snugly in the hand and protects the user from vibrations. The speed is reduced via planetary gearing that is installed in the nose downstream of the armature shaft. The nose owes its centred slender form to the compact design of the tool, whose quiet running testifies to the high manufacturing quality of the optimal gear geometry – and to a high service life.



USK 6-R

USG 9-R

USC 9-R